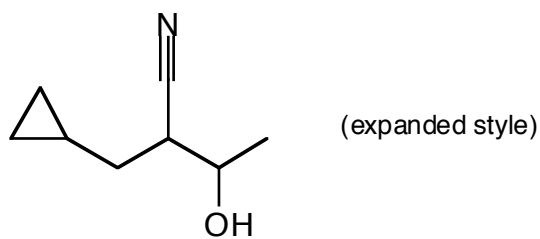
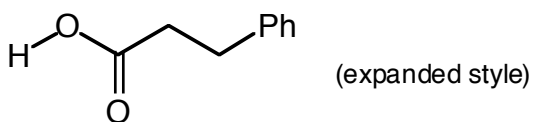
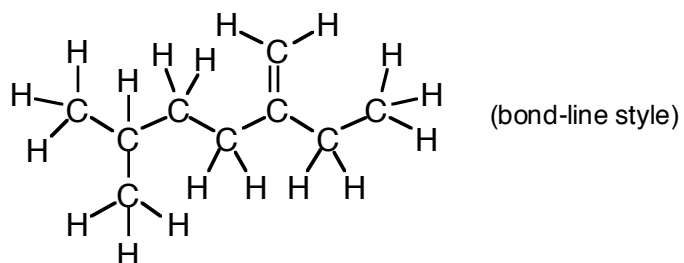
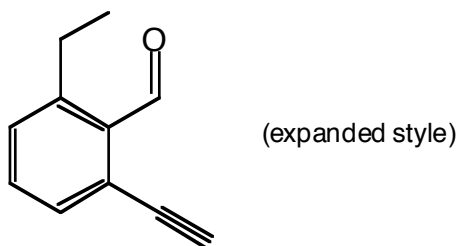
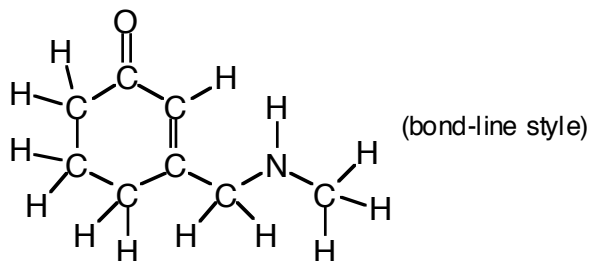
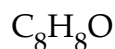
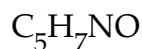
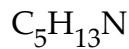
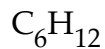


Drawing Styles, Molecular Formulas & Isomers

1. Convert each structure below into the style requested. Give the molecular formula of each molecule.



2. Draw 3 possible structural isomers in the expanded style for each of the following molecular formulas. Use the formula for IHD to get started. Where the IHD is greater than 0, make sure that you have examples of several possible combinations of rings, double bonds, and triple bonds, as appropriate.



3. For each pair of molecules below, determine if they are different drawings of the same molecule, or whether they are really different molecules (write *same* or *different*).

